



This map shows Scholars Programme placements in Spring 2018/19

Congratulations to our Brilliant Club students of 2019.

### The 2019 Scholars Programme: Programme Summary and Impact Report

This Brilliant Club placed over 235 PhD tutors to work with 13,000 pupils across 301 schools in the UK. The Scholars Programme is designed to help pupils develop the knowledge, skills and ambition that support progression to highly selective universities. The programme does this placing PhD tutors in schools to deliver university-style learning to small groups of pupils. The programme has a strong academic focus and it is designed to stretch and challenge pupils. In this years programme Beaconsfield School students visited Wadham College, the University of Oxford and The London School of Economics. Students completed in school tutorials with their PHD tutor Robin Shields., culminating in a 2,000 word essay on power and politics in Medieval Dubrovnik.

Course Handbook



University Preparation	Before	After
I understand why and how people study when they are at university	25%	63%
I know the steps I need to take to apply to university in the future	13%	50%
I am capable of studying at a highly selective university	25%	63%

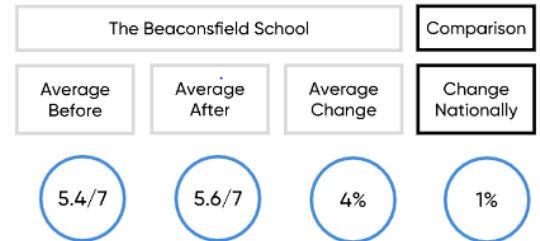
Statement	% of parents who strongly agree or agree	
	The Beaconsfield School	National Average
Parents attending graduation events		
I would recommend The Scholars Programme to other parents	100%	94%
I would like my child to attend a highly selective university when they are older	100%	80%
I think that my child is capable of studying at a highly selective university when they are older	100%	98%
I have enjoyed visiting this university for The Scholars Programme Graduation Trip	100%	94%
I think that today's visit will help me to better support my child to secure a place at a highly selective university	89%	81%
My child will be able to study at this university when they are older and if they work hard at school	89%	90%
I plan to speak with my child more about university after this trip	100%	93%



Self-Efficacy



belief that pupils can achieve future goals

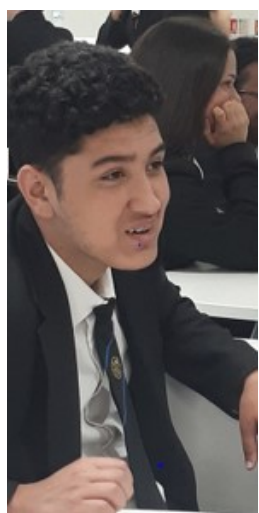


The following averages were generated from baseline and final assignments.

Skill	The Beaconsfield School Average progress	National Comparison Average progress
Structure and Presentation	18%	16%
Language and Style	18%	14%
Subject Knowledge	16%	15%
Research and Evidence	20%	20%
Developing and Argument	18%	17%

Programme Officer Comment

'It's great to see that pupils' made substantial positive progress across all three academic competencies.'



This table shows programme attainment and attendance compared to the 94 schools in the South and for the 301 schools across the country.

	The Beaconsfield School Average	National Average	South Average
Averages progress between baseline and final assignment	18%	15%	15%
% Final assignment submission rate	100%	83%	88%
% Tutorial attendance	97%	90%	92%

'I have improved my essay writing skills which is good. I also enjoyed it as a whole.'

Pupil at The Beaconsfield School